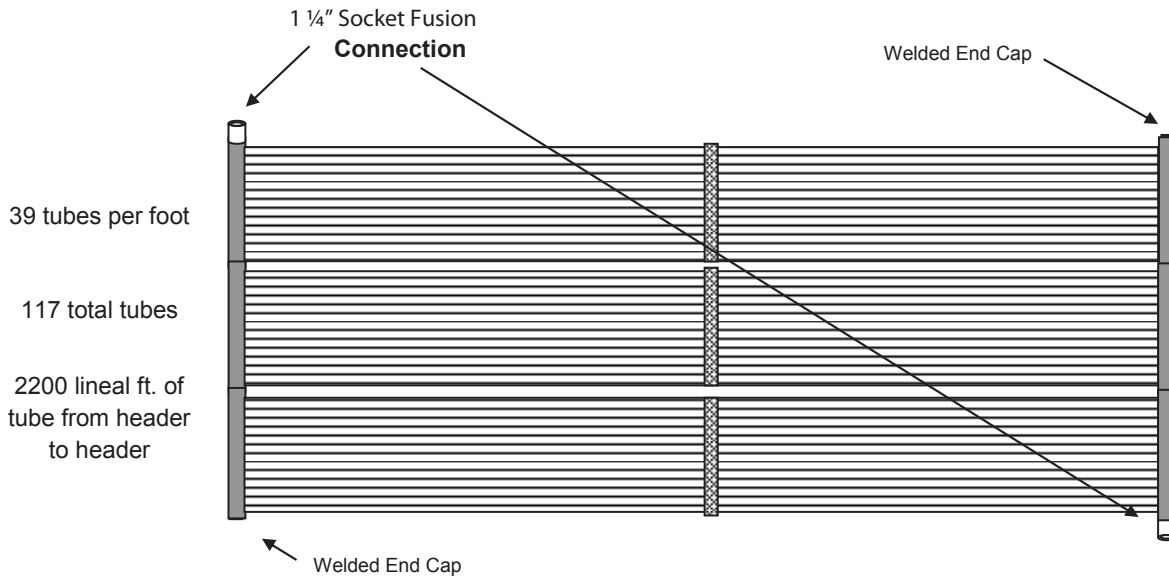


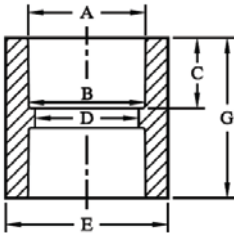
HYPER LOOP

Breaking the Geo Barriers.



Dimensions	Tube DR	Header DR	Panel Volume	Panel Displacement	Flush Rate	Working Pressure	Working GPM (PSI DROP)	Sizing*
3' x 18'8"	8	10	4.1 gallons	7.5 gallons	20 GPM	72 psi @ 104°F 48 psi @ 140°F	3.5 GPM (0.25 psi) 7 GPM (0.5 psi)	2 Tons per unit

Pond Sizing: *2-Tons per HyperLoop in pond/lake applications when 6gpm per HyperLoop is applied.
 The general rule of thumb for pond size is 1500-3000 square foot of pond per ton of loop.
 The loop must remain below ice cover and away from swimmers.



1 1/4" Socket Fusion Connection

A	B	C	D	E	G
1.620	1.612	.961	1.404	2.277	2.19
+/- .008	+/- .008	+/- .015	+/- .015	+/- .032	

HyperLoop Pressure Drop Chart

